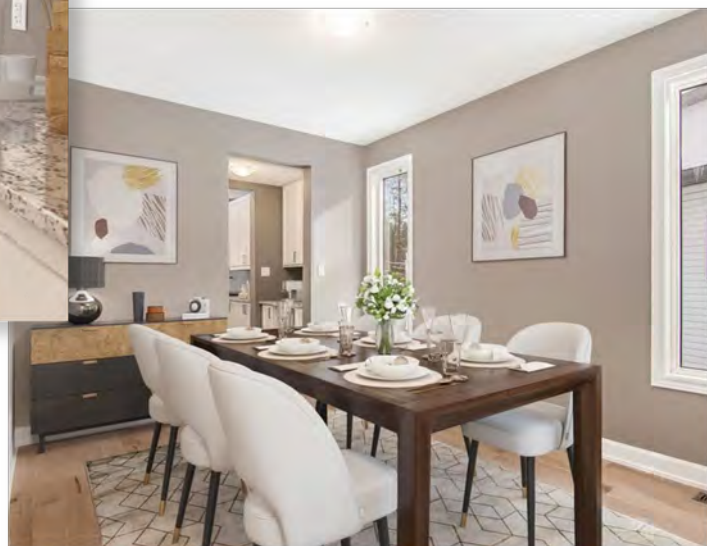




3 CAR GARAGE OPTIONAL ON SELECT LOTS

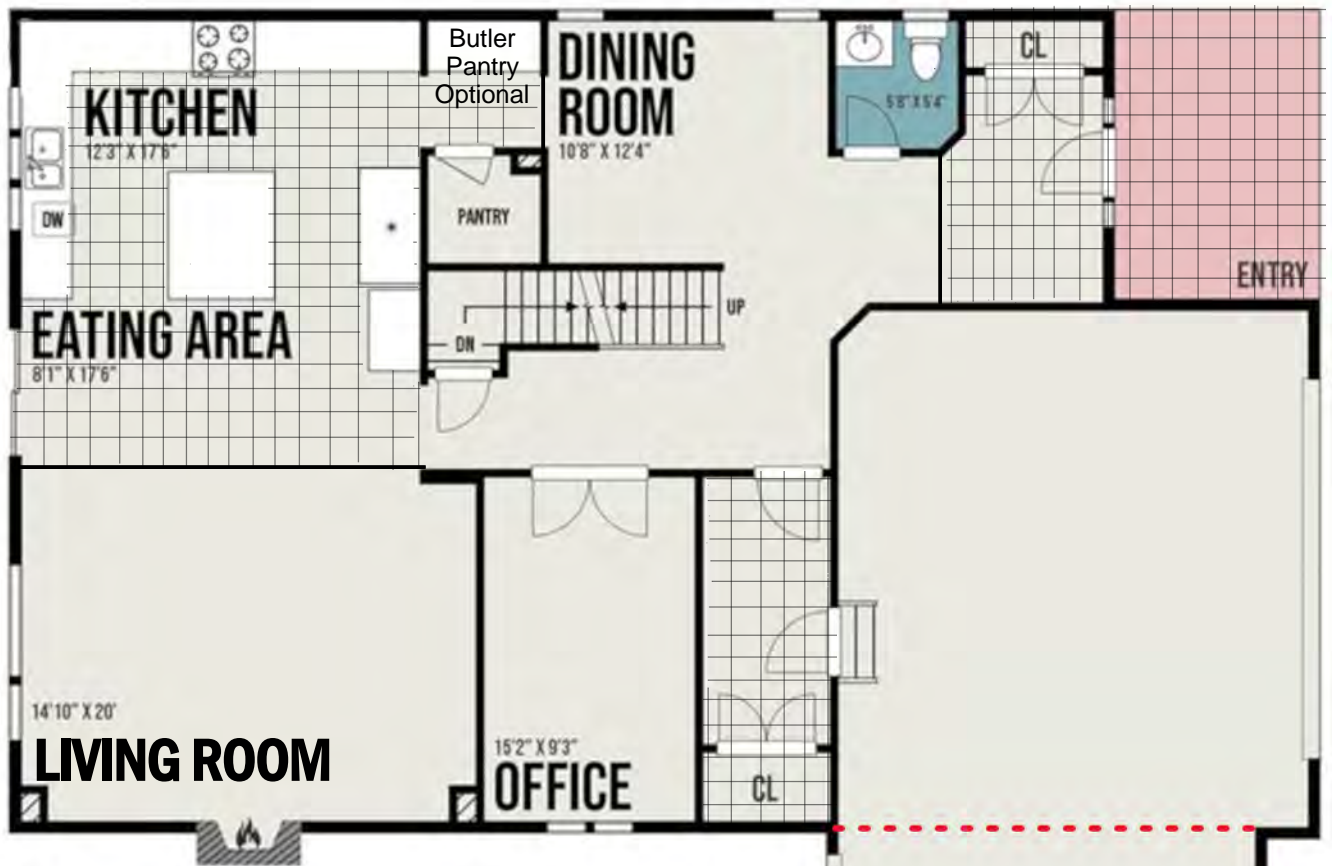


Upgrades to brick, front siding, widow frames, fascia, soffits, garage and door are shown.

E.O. & E. SEPT 2024

SYRAH

TL = 3000 sq. ft.

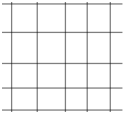


FRONT

FIRST FLOOR



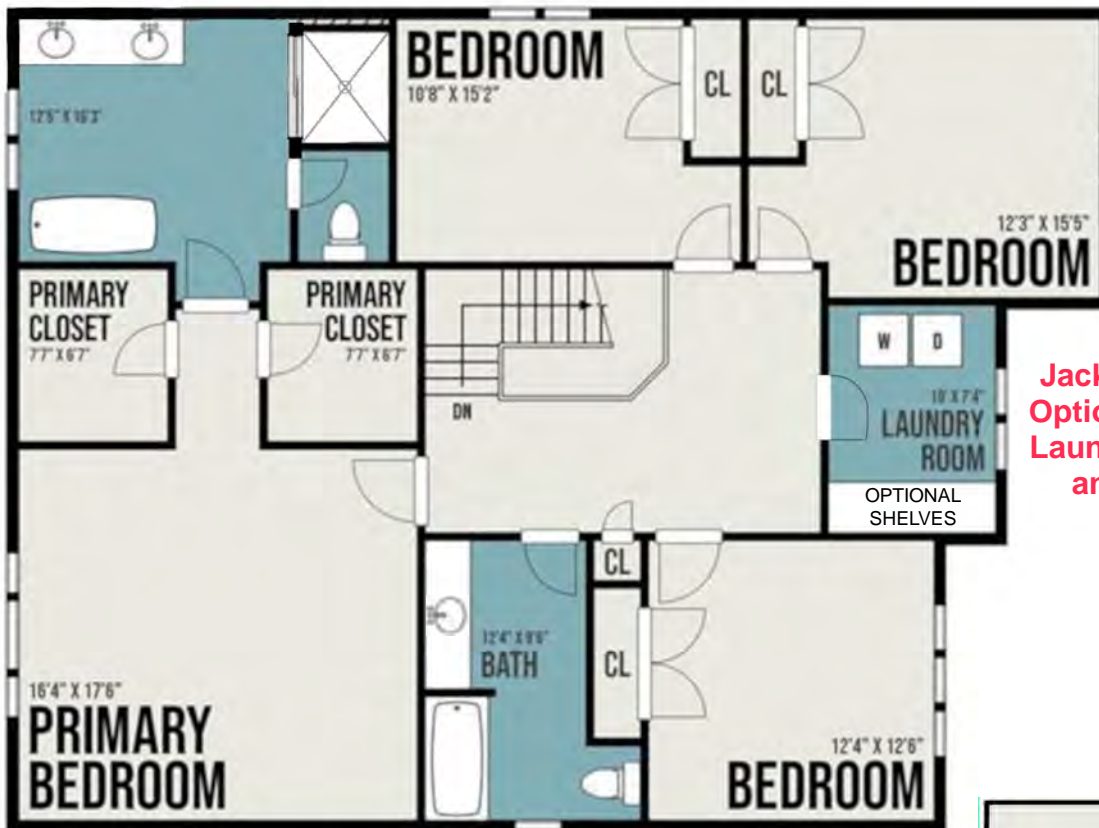
Ceramic Tile Flooring



Ceramic Tile Flooring

**3 CAR GARAGE OPTIONAL
ON SELECT LOTS**

**30' x 20'
GARAGE**

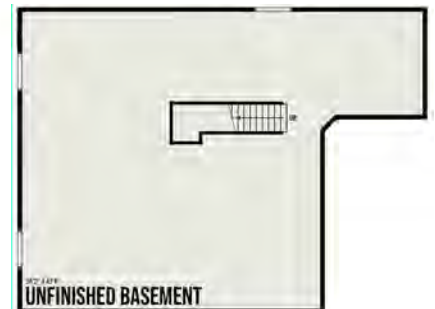


FRONT

SECOND FLOOR

**Jack & Jill Bathroom
Option with moving of
Laundry to Main Floor
and reconfigure**

BASEMENT FLOOR



UNFINISHED BASEMENT



Actual usable square footage may vary from stated areas on these drawings

E.O. & E. SEPT 2024

SYRAH

TL = 33000 sq.ft.